

Tim Martin
.co.uk



15 Eden Road
Gilnahirk, Belfast
BT5 7TD

Offers Around
£329,950

www.timmartin.co.uk
Telephone 028 91 878956

SUMMARY

A beautifully presented detached residence, situated on this peaceful and picturesque road and within close proximity to Comber, Gilnahirk and Dundonald.

The property is ideal for the growing and established families or those wishing to downsize to the country and enjoy rural living with convenience in mind. The accommodation is beautifully appointed throughout with the ground floor comprising of a spacious lounge with wood burning stove, living room with multi fuel stove, fitted kitchen, dining room, conservatory, and WC, whilst the first floor enjoys three excellent sized bedrooms and bathroom, fitted with a modern white suite.

Outside, the property boasts a garage and large store/workshop with basement, perfect for a personal hobby or those wishing to work from home. Spacious gardens to the rear are laid out in lawn with paved patio areas, all of which enjoy beautiful views over the surrounding countryside.

Many local attractions are close by including Castlereagh Hills and Shandon Park Golf Club, Streamvale Farm, Hillmount Garden centre and Forestside Shopping centre, whilst an excellent choice of primary and secondary schools are all within close proximity. Belfast city centre is also within a short commute.

FEATURES

- Beautifully Presented Detached Family Residence Situated In This Peaceful Location
- Three Excellent Sized Bedrooms
- Three Reception Rooms Plus Conservatory
- Spacious Fitted Kitchen With Pantry
- Downstairs WC And First Floor Bathroom With Modern White Suite
- Oil Fired Central Heating And Double Glazing
- Detached Garage With Large Store / Workshop And Basement
- Enclosed Gardens To The Rear Laid Out In Lawn With Patio Areas Overlooking The Surrounding Countryside
- Within Close Proximity To Comber, Gilnahirk, Dundonald And Belfast City Centre
- Convenient To An Excellent Choice Of Primary And Secondary Schools

Entrance Hall

Glazed pvc entrance door with matching side lights; tiled floor.

Lounge 17'7 x 13'0 (maximum measurements) (5.36m x 3.96m (maximum measurements))

Beautiful feature stone wall with inglenook style fireplace with wood burning stove on slate hearth; feature ceiling beams.

Living Room 21'10 x 11'1 (6.65m x 3.38m)

Inglenook style fireplace with multi fuel stove on slate hearth; pine mantle over; wood laminate floor; tv aerial connection point; under stairs storage cupboard; glazed double doors through to:-

Conservatory 13'6 x 12'10 (4.11m x 3.91m)

Tiled floor; glazed upvc double doors to patio area.

Kitchen 13'11 x 13'4 (4.24m x 4.06m)

Excellent range of high and low level cupboards and drawers with matching glazed cupboard incorporating 1½ tub sink unit with mixer tap; integrated Whirlpool electric under oven with 4 ring gas hob; concealed extractor fan over; space and plumbed for washing machine; space for tumble dryer and fridge freezer; formica worktops; tiled splashback; wood strip floor.

Pantry 7'3 x 3'9 (2.21m x 1.14m)

Dining Room 13'11 x 13'6 (maximum measurements) (4.24m x 4.11m (maximum measurements))

Wood laminate floor; upvc glazed sliding door to rear.

WC 6'10 x 3'11 (2.08m x 1.19m)

Modern white suite comprises close coupled wc and wall mounted wash hand basin with mono mixer tap; vanity unit under; towel radiator; wood laminate floor.

First Floor / Landing

Bedroom 1 13'9 x 8'10 (4.19m x 2.69m)

Bathroom 13'8 x 5'1 (4.17m x 1.55m)

Modern white suite comprising panel bath with pillar mixer tap; telephone shower attachment; wall mounted wash hand basin with mono mixer tap; vanity unit under; close coupled wc; separate tiled shower cubicle with thermostatically controlled shower unit; wall mounted telephone shower attachment; fitted sliding shower doors; part tiled walls; tiled floor; towel radiator.

Bedroom 2 12'10 x 11'1 (3.91m x 3.38m)

Bedroom 3 10'9 x 8'6 (3.28m x 2.59m)

Hotpress with copper cylinder; access to roofspace.

Outside

Crazy paved and concrete driveway; separate gravelled driveway leading to:-

Garage 19'7 x 17'4 (5.97m x 5.28m)

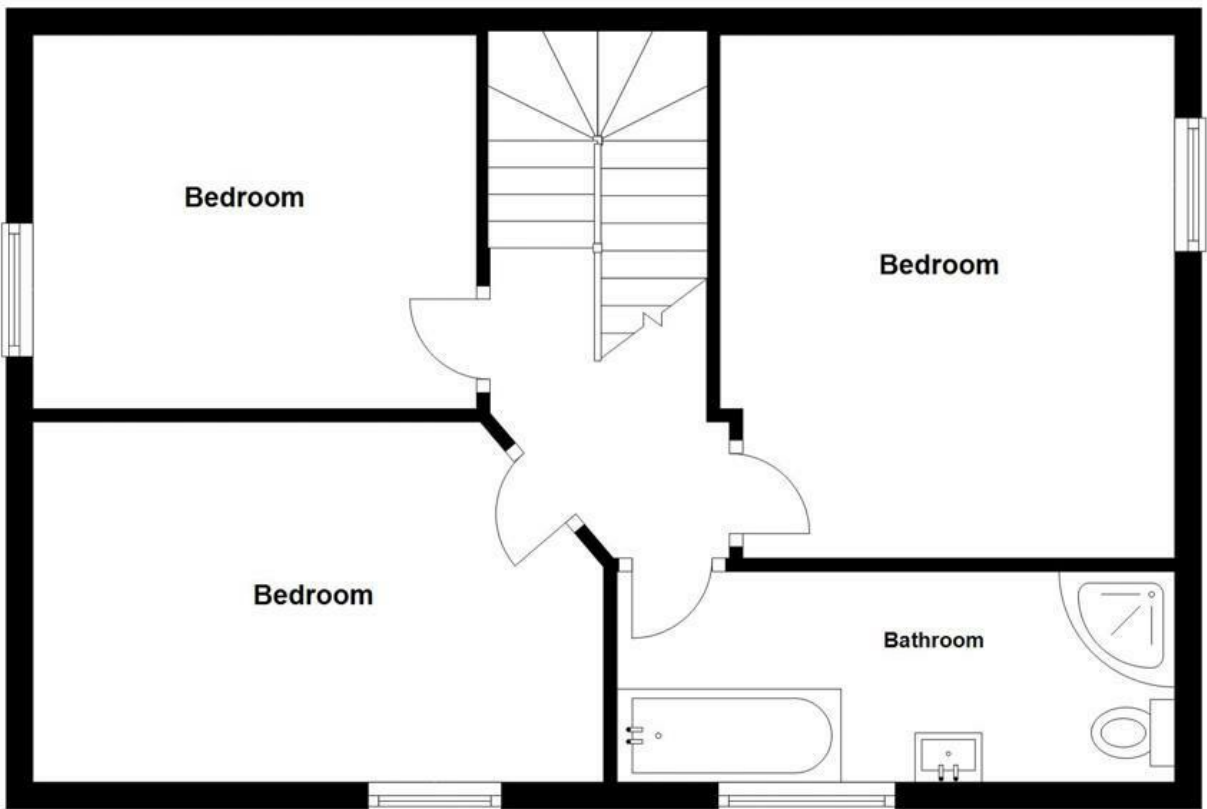
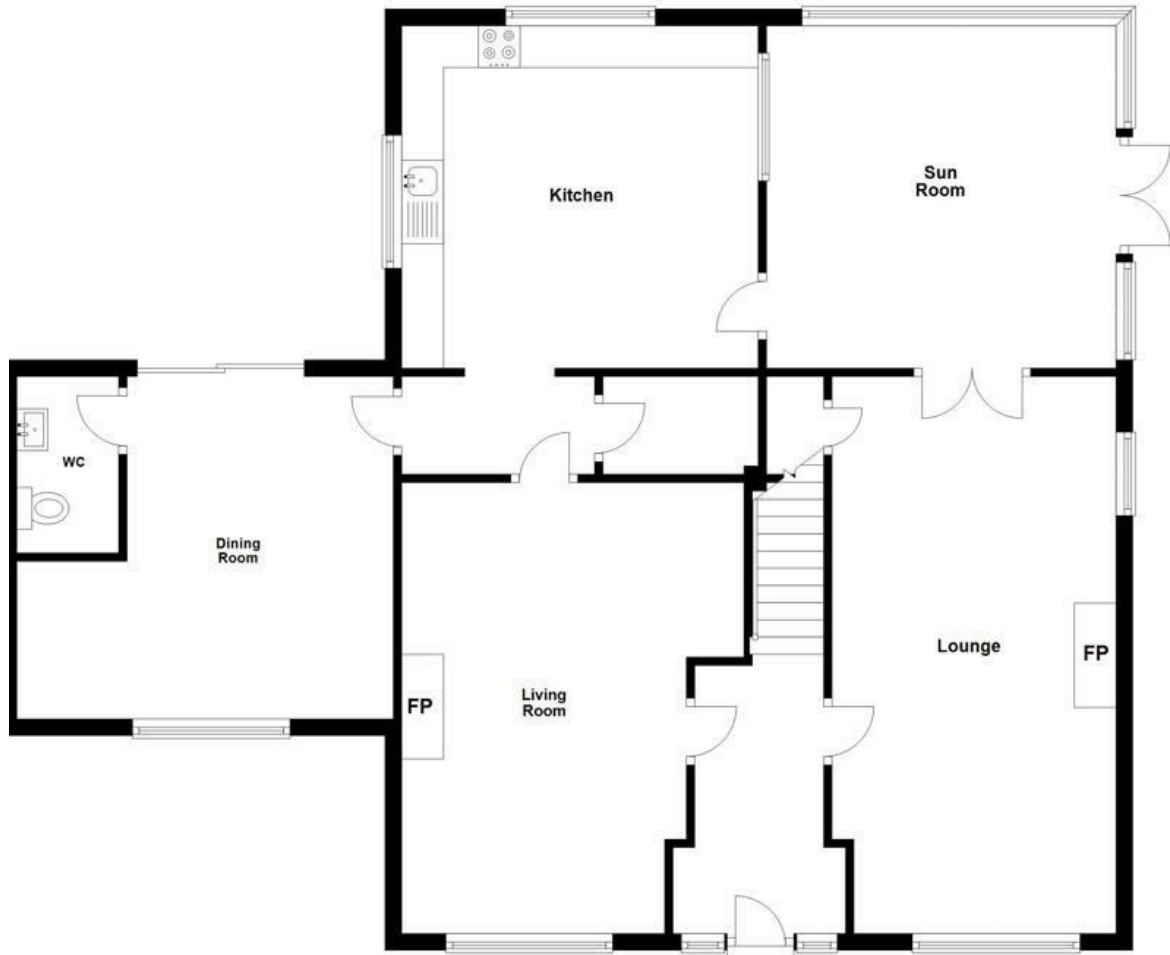
Double wooden doors; Firebird oil fired boiler; light and power points

Tenure

Freehold

Capital Rateable Value

£220,000. Rates Payable = £1914.00 per annum (approx)











Energy Efficiency Rating		Current	Potential
Very energy efficient - lower running costs			
(92 plus) A			
(81-91) B			
(69-80) C			
(55-68) D			
(39-54) E		47	52
(21-38) F			
(1-20) G			
Not energy efficient - higher running costs			

Comber
 27 Castle Street, Comber, BT23 5DY
 T 028 91 8789596

Saintfield
 1B Main Street, Saintfield, BT24 7AA
 T 028 97 568300

Tim Martin & Company for themselves and for the vendors of this property have endeavoured to prepare these sales details as accurate and reliable as possible for the guidance of intending purchasers or lessees. These particulars are given for general guidance only and do not constitute any part of an offer or contract. The seller and us as agents, do not make any representation or give any warranty in relation to the property. We would recommend that all information contained in this brochure about the property be verified by yourself or professional advisors. Services, fittings and equipment referred to in the sales details have not been tested (unless otherwise stated) and no warranty will be given as to their condition. All measurements contained within this brochure are approximate. Please contact us prior to viewing the property. If there is any point of particular importance to you we would be pleased to provide additional information or make further enquiries. We will also confirm that the property remains available. This is particularly important if you are contemplating travelling some distance to view the property.